

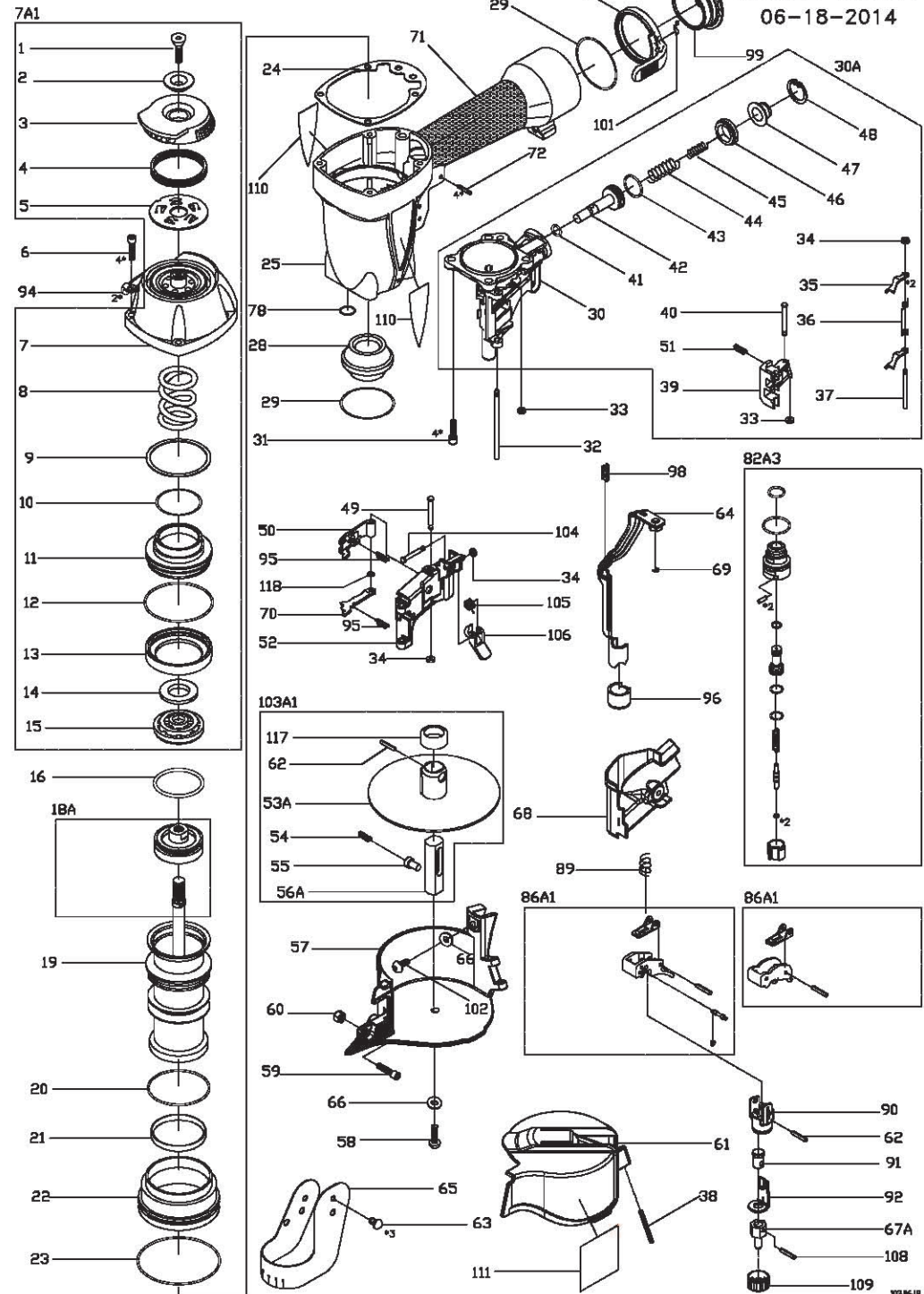
Parts List

CNW 57

CNW57 COIL NAILER
MODEL B21094
06-18-2014

| Item No | Part No | Description | Qty |
|---------|---------|----------------------|-----|
| 1 | 613001 | FLAT.HD.BOLT | 1 |
| 2 | 613002 | FRONT BRACKET | 1 |
| 3 | 613415 | EXHAUST COVER | 1 |
| 4 | 613004 | EXHAUST FILTER | 1 |
| 5 | 613407 | EXHAUST FILTER PLATE | 1 |
| 6 | 613436 | HEX.SOC.HD.BOLT | 4 |
| 7 | 613240 | CAP | 1 |
| 8 | 613241 | SPRING | 1 |
| 9 | 613009 | WASHER | 1 |
| 10 | 613010 | O-RING** | 1 |
| 11 | 613011 | PISTON HEAD VALVE** | 1 |
| 12 | 613012 | O-RING ** | 1 |
| 13 | 613013 | SEAL ** | 1 |
| 14 | 613014 | PLAIN WASHER | 1 |
| 15 | 613015 | PISTON STOPPER | 1 |
| 16 | 613428 | O-RING ** | 1 |
| 18A | 613242 | DRIVER ASSEMBLY ** | 1 |
| 19 | 613243 | CYLINDER | 1 |
| 20 | 613429 | O-RING ** | 1 |
| 21 | 613244 | CYLINDER RING | 1 |
| 22 | 613245 | COLLAR | 1 |
| 23 | 613430 | O-RING ** | 1 |
| 24 | 613417 | GASKET ** | 1 |
| 25 | 613246 | BODY | 1 |
| 28 | 613247 | BOTTOM BUMPER ** | 1 |
| 29 | 613029 | O-RING ** | 1 |
| 30 | 613248 | NOSE | 1 |
| 31 | 613249 | HEX.SOC.HD.BOLT | 4 |
| 32 | 613250 | STEPPED PIN | 1 |
| 33 | 613034 | RETAIN RUBBER | 1 |
| 34 | 613047 | RETAIN RUBBER | 3 |
| 35 | 613251 | CHECK PAWL | 2 |
| 36 | 613049 | SPRING | 1 |
| 37 | 613050 | STEPPED PIN | 1 |
| 38 | 613252 | ROLLED PIN | 1 |
| 39 | 613253 | FEED PAWL | 1 |
| 40 | 613044 | STEPPED PIN | 1 |
| 41 | 613036 | O-RING | 1 |
| 42 | 613037 | FEED PISTON | 1 |
| 43 | 613038 | O-RING ** | 1 |
| 44 | 613039 | SPRING | 1 |
| 45 | 613040 | SPRING | 1 |
| 46 | 613254 | FEED PISTON STOP | 1 |
| 47 | 613042 | SPRING COLLAR | 1 |
| 48 | 613043 | C-RING | 1 |
| 49 | 613255 | STEPPED PIN | 1 |
| 50 | 613256 | RATCHET | 1 |

| Item No | Part No | Description | Qty |
|---------|---------|---------------------------|-----|
| 51 | 613045 | SPRING | 1 |
| 52 | 613257 | DOOR | 1 |
| 54 | 613067 | SPRING | 1 |
| 55 | 613068 | SET SHAFT | 1 |
| 56A | 613069 | SLIDE ROD | 1 |
| 57 | 613258 | MAGAZINE | 1 |
| 58 | 613071 | UM.HD.BOLT | 1 |
| 59 | 166063 | HEX.SOC.HD.BOLT | 1 |
| 60 | 613207 | LOCK NUT | 1 |
| 61 | 613259 | MAGAZINE COVER | 1 |
| 62 | 400828 | ROLLED PIN | 1 |
| 63 | 613064 | RUBBER INSERT | 3 |
| 64 | 613260 | SAFETY ASSY | 1 |
| 65 | 613063 | DUST COVER | 1 |
| 66 | 070545 | FLAT WASHER | 2 |
| 67A | 613261 | ADJ. BOLT | 1 |
| 68 | 613262 | NOSE COVER | 1 |
| 69 | 613202 | E-RING | 1 |
| 70 | 613263 | CHECK PAWL | 1 |
| 71 | 613028 | RUBBER GRIP | 1 |
| 72 | 613031 | ROLLED PIN | 4 |
| 78 | 613264 | O-RING ** | 1 |
| 82A3 | 613124 | SWITCH ASSY ** | 1 |
| 86A1 | 613095 | SEQUENTIAL TRIGGER (GREY) | 1 |
| | 613096 | BUMP TRIGGER (ORANGE) | 1 |
| 89 | 613212 | SPRING | 1 |
| 90 | 613214 | TRIP GUIDE | 1 |
| 91 | 613215 | SET SHAFT | 1 |
| 92 | 613216 | CONTACT TRIP BLOCK | 1 |
| 94 | 613265 | PROTECTOR | 2 |
| 95 | 613266 | SPRING | 1 |
| 96 | 613267 | NO MAR TIP ** | 1 |
| 98 | 613060 | SPRING | 1 |
| 99 | 613218 | COVER | 1 |
| 100 | 613224 | HOOK | 1 |
| 101 | 613225 | HOOK PLATE | 1 |
| 102 | 615942 | UM.HD.BOLT | 1 |
| 103A1 | 613268 | NAIL ADJ.SUPPORT | 1 |
| 104 | 613219 | STEPPED PIN | 1 |
| 105 | 613220 | SPRING | 1 |
| 106 | 613221 | DOOR LOCK | 1 |
| 108 | 613222 | ROLLED PIN | 1 |
| 109 | 613223 | ADJ. WHEEL | 1 |
| 110 | 613269 | LOGO HOUSING LABEL | 1 |
| 111 | 613270 | MODEL LABEL | 1 |
| 117 | 613271 | METAL PAD | 1 |



** Denotes Wear item